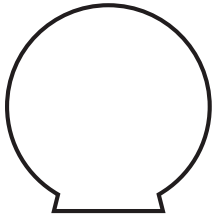


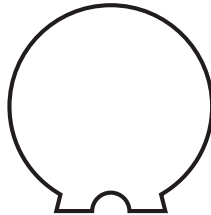
## Globes: Ordering Guide

1. Determine which style base you have: Lip Fitter, Twist Lock, Flush or Threaded.

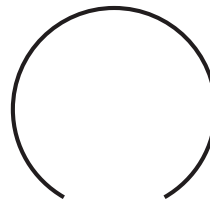
LIP FITTER



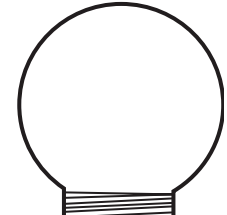
TWIST LOCK



FLUSH



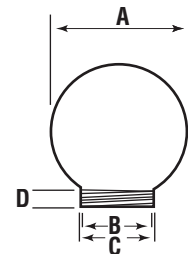
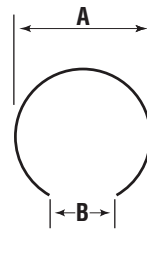
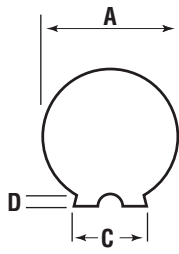
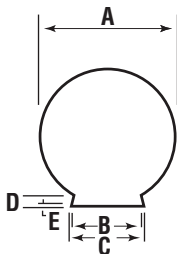
THREADED



2. Measure the diameter of the globe ("A" measurement).

3. For Flush Hole style globes, measure the opening indicated by "B".

4. For Lip Fitter & Twist Lock style globes, measure the base at the point indicated by "C".



A. Diameter: \_\_\_\_\_ B. Opening: \_\_\_\_\_ C. Base: \_\_\_\_\_  
*(flush globes only)* *(lip fitter and twist lock only)*

Helpful Hint: To convert circumference to diameter, measure the circumference and divide by 3.14.  $[A \div 3.14]$

5. Indicate color: (circle one)

White      Clear      Bronze      Other \_\_\_\_\_

6. Indicate material require: (circle one)

Acrylic      Polycarbonate      Other \_\_\_\_\_

### Remember:

1. Remove hardware at globe opening to get an accurate measurement.
2. Mounting hardware is generally **NOT** included in globe prices.
3. Accessories such as Post Top Fitters, Heat Shields and Aluminum Neck Rings are available on page 62.